

SHALIKA

VOI.69





Since Shalika
made of elegant & fine fabrics

QUEEN COUTURE

THE KEY IS TO CONTRAST TWO ELEMENTS SO YOU DON'T END UP OVER DOING THE FEMININE QUOTIENT.

BRELLIANT HUES AND LUSTROUS TEXTURES GIVE YOU A NEW MAKEOVER THIS SEASON.





Shree Shalika
KATKI
MADE IN INDIA

EYEVIEW MILES OF STYLE

EVERY WOMEN DESERVES TO LOOK PRETTY
AND THIS DESIGNED DRESSES AND PRINTS HELP THEM TO LOOK PRETTY ENOUGH.



BEAUTIFUL SHADES





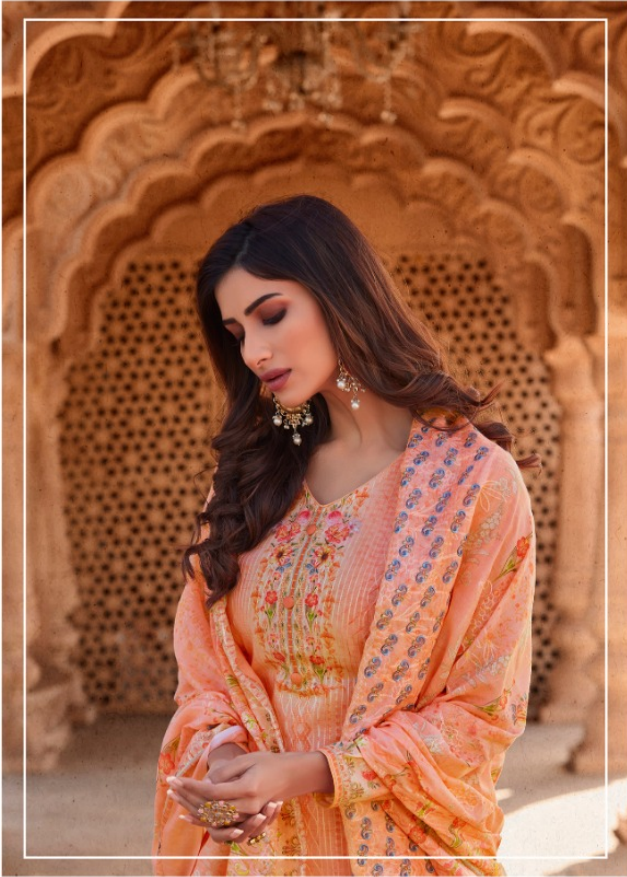
Shree Svalika
EST. 2012

HAUTE COUTURE

WE HANDPICKED THE KEY PIECES THAT YOU MUST GET YOUR HANDS ON
BEFORE THEY FLY OFF THE RACKS.



TIMELESS TRENDS



THE CONTEMPORARY DESIGN FOR THE FASHION CONSCIOUS WOMAN WHILE PRESERVING THE ART AND CULTURE OF INDIA.





Since Shalika
A Collection

GLAMOUR AND GLITTERS

SIMPLE WITHOUT LETTING GO OF ELEGANCE AND CASUAL WITH NATURAL FABRIC, USE FABRICS
POLYESTERS AND SUMPTUOUS DETAILING ADDEN MODERN IN HOUSEHOLD.





Since Shalika

2601

.STYLISH ELEGANCE.



THE WEATHER IS PERFECT FOR PASTEL COLORED SALWAR SUIT WEARING IT GIVES YOU THE COMFORT CONFIDENCE AND GLASSY ATTITUDE.

SHALIKA

VOI.69

◆ **PRODUCT DETAILS** ◆

TOP

.....

COTTON DIGITAL PRINT WITH AARI WORK

BOTTOM

.....

PURE COTTON

DUPATTA

.....

**COTTON DUPATTA DIGITAL PRINT
WITH AARI WORK**

DESIGN NUMBERS

.....

2601 TO 2608

RATE

.....

995/-



Siree Shalika
WOMEN'S WEAR

2606

ARTISTIC AND DESIGNER



ARTISTRY AT IT PEAK A FINALLY DESIGNED ETHNIC COLLECTION
THE MUSE HAS COLLECTION IN YOUR WARDROBE.



SMART CLOTHING EVERYDAY



SMART CLOTHING MEANS THE SENCE OF DRESSING EVRY OOCATION NEEDS A DIFFRENT OUTFIT AND GOMFORT MAKES YOU FEEL FREE TO ACT VISE AND GENTAL.

GLORIOUS CHARM



GOOD ENVIRONMENT AND GOOD COMPANY IS RARE BUT GOOD OUTFIT COLLECTION CAN BE FOUND. WITH THE RIGHT CLOTHES YOU CAN FIND THE BEST THINGS EASILY AND YOU CAN ENJOY THAT THINGS LAST LONG.



FABULOUS FASHION



I THINK THERE IS BEAUTY IN EVERYTHING WHAT NORMAL PEOPLE
WOULD PERCEIVE AS UGLY I CAN USALLY SEE SOMETHING OF BEAUTY IN IT.





.GLORY OF WOMAN.



ELEGANCE AND STYLE IS ALWAYS AN INTERGRATED PART OUR TWO SOCIETYS VILAGES AND METRO CITYS
YOU ADOFT SUOH STYLE YOU FEEL A SENSE OF ELEGANCE AND SPIRIT OF WOMANISM .



2601



2602



2603



2604



2605



2606



2607



2608



Shree Shalika