



sheeshmahal®





sheeshmahal®



#S-08

TOP:-
FOX JEORGETTE WITH
EMBROIDERY
BOTTOM / INER:-
SANTOON
DUPATTA:-
NAZMEEN EMBROIDERY
WITH LATKAN

WASHING INSTRUCTIONS
DO NOT USE WITH TYPE OF BLEACH OR STRONG BLEACHING CHEMICALS
BEFORE DYEING/COLORING FABRIC SHOULD BE SOAKED IN WATER
ALL COMPONENTS SHOULD BE WASHED SEPARATELY FOR 15 MINUTES
DO NOT KEEP WET FABRIC IN TUBS OR PANS IN ORDER TO AVOID DISCOLORATION
HIGH-COLORED AND WHITE FABRICS SHOULD
BE WASHED SEPARATELY TO AVOID DISCOLORATION. IN ORDER TO AVOID
EXTRA WATERING AND ACCESSORIES ARE NOT INCLUDED.



sheeshmahal®



#S-09

TOP:-
FOX JEORGETTE WITH
EMBROIDERY
BOTTOM / INER:-
SANTOON
DUPATTA:-
NAZMEEN EMBROIDERY
WITH LATKAN

WASHING INSTRUCTIONS
DO NOT USE ANY TYPE OF BLEACH OR STRONG BLEACHING AGENTS
BEFORE DYEING OR COLORING FABRIC SHOULD BE WASHED IN COLD WATER
ALL COMPONENTS SHOULD BE WASHED SEPARATELY
DO NOT KEEP WET FABRIC IN TUBS OR PANS IN ORDER TO AVOID DISCOLORATION
HIGH-COLORED AND WHITE FABRICS SHOULD BE WASHED SEPARATELY
IRON CLOTHES AT MEDIUM TO HIGH TEMPERATURES IN DIRECT SUNLIGHT
EXTRA LABELING AND ACCESSORIES ARE NOT INCLUDED





sheeshmahal®



#S-07

TOP:-
FOX JEORGETTE WITH
EMBROIDERY
BOTTOM / INER:-
SANTOON
DUPATTA:-
NAZMEEN EMBROIDERY
WITH LATKAN

WASHING INSTRUCTIONS
DO NOT USE ANY TYPE OF BLEACH OR STRONG BLEACHING CHEMICALS
BEFORE DRYING COLORING FABRICS SHOULD BE WASHED IN COLD WATER
ALL COMPONENTS WASHED SEPARATELY FOR 15 MINUTES
DO NOT KEEP WET FABRIC IN TUBS OR PANS IN ORDER TO AVOID STAINING
HIGH-COLORED AND WHITE FABRICS SEPARATELY
IRON CLOTHES AT WOODS SIDE TEMPERATURE DO NOT USE FABRIC IN DIRECT SUNLIGHT
EXTRA CARE HANDLING AND ACCESSORIES ARE NOT INCLUDED



sheeshmahal®



TOP:-
FOX JEORGETTE WITH
EMBROIDERY
BOTTOM / INER:-
SANTOON
DUPATTA:-
NAZMEEN EMBROIDERY
WITH LATKAN

#S-06

WASHING INSTRUCTIONS
DO NOT USE ANY TYPE OF BLEACH OR CHLORINE BLEACHING AGENTS
BEFORE DYEING OR COLORING FABRICS SHOULD BE SOAKED IN WATER
AND COMPLETED WASHED FOR 15 MINUTES
DO NOT KEEP HOT FABRIC IN TIGHTY FOLD IN CLOSET TO AVOID CREASING
HIGH-COLOURED AND WHITE FABRIC SHOULD
BE SEPARATED AT WASHING TO AVOID COLOR TRANSFER IN DIRECT SUNLIGHT
(EXTRA LABELING AND ACCESSORIES ARE NOT INCLUDED)



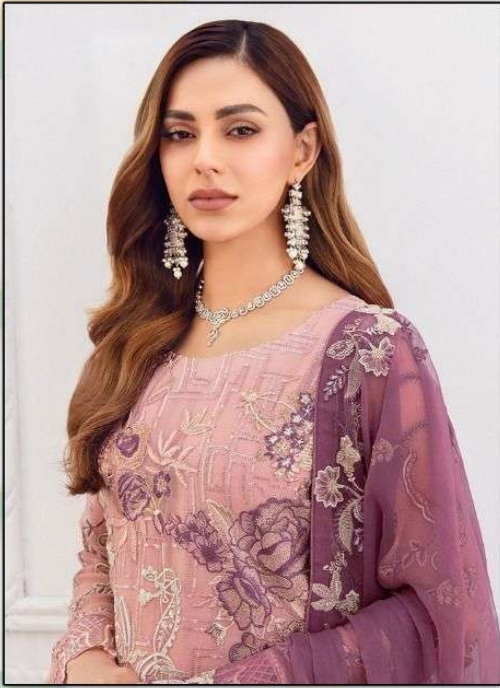








sheeshmahal®



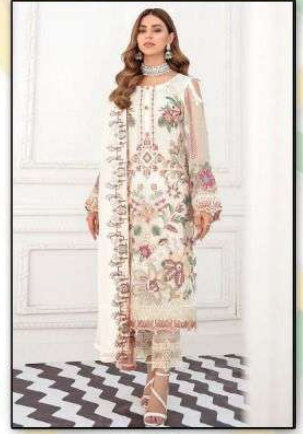
TOP:- FOX JEORGETTE WITH EMBROIDERY

BOTTOM/INER:- SANTOON

DUPATTA:- NAZMEEN EMBROIDERY WITH LATKAN



#S-06



#S-07



#S-08



#S-09

