

**pushp**  
CREATION

**D.NO.:1037 C**



#### **FABRIC DETAILS**

**TOP.** CAMBRIC COTTON WITH HEAVY BORING EMBROIDERY WORK

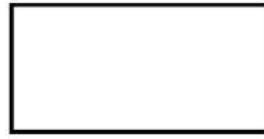
**DUPATTA.** TABBY SILK WITH EMBROIDERY LACE

**BOTTOM.** SEMILOWN

**DRY CLEAN ONLY.**

**DO NOT USE ANY BLEACH OR STAIN REMOVING CHEMICAL  
RON THE FABRIC AT MODERATE TEMPERATURE.**





**pushp**  
CREATION

**D.NO.:1037 A**



#### **FABRIC DETAILS**

**TOP.** CAMBRIC COTTON WITH HEAVY BORING EMBROIDERY WORK

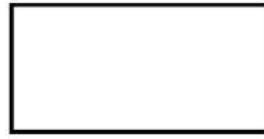
**DUPATTA.** TABBY SILK WITH EMBROIDERY LACE

**BOTTOM.** SEMILOWN

**DRY CLEAN ONLY.**

**DO NOT USE ANY BLEACH OR STAIN REMOVING CHEMICAL  
RON THE FABRIC AT MODERATE TEMPERATURE.**





**pushp**  
CREATION

**D.NO.:1037 C**



#### **FABRIC DETAILS**

**TOP.** CAMBRIC COTTON WITH HEAVY BORING EMBROIDERY WORK

**DUPATTA.** TABBY SILK WITH EMBROIDERY LACE

**BOTTOM.** SEMILOWN

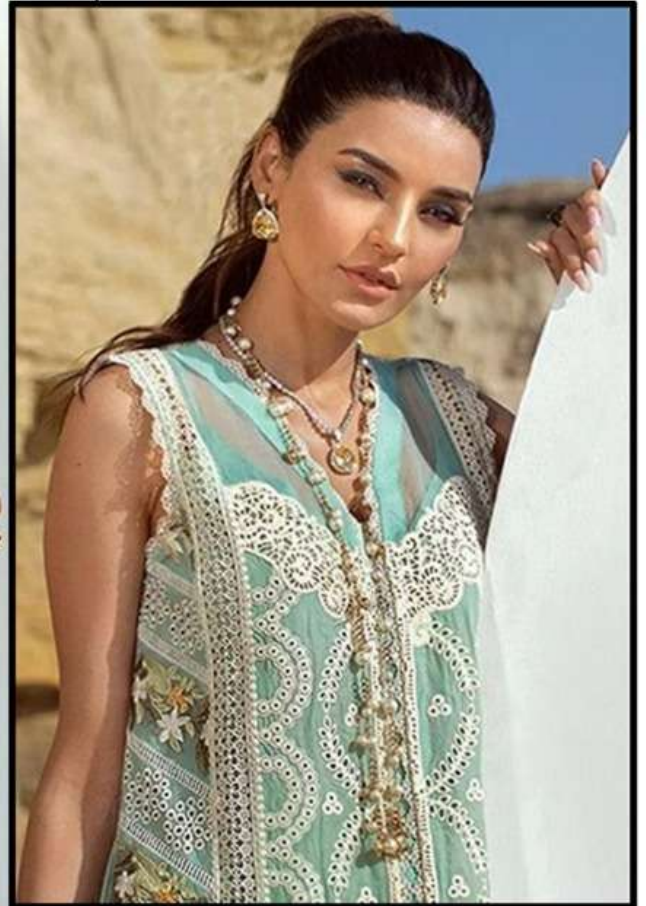
**DRY CLEAN ONLY.**

**DO NOT USE ANY BLEACH OR STAIN REMOVING CHEMICAL  
RON THE FABRIC AT MODERATE TEMPERATURE.**





**pushp**  
CREATION  
D.NO.:1037 B



#### FABRIC DETAILS

**TOP.** CAMRIC COTTON WITH HEAVY BORING EMBROIDERY WORK

**DUPATTA.** TABBY SILK WITH EMBROIDERY LACE

**BOTTOM.** SEMILOWN

☎ DRY CLEAN ONLY.  
✘ DO NOT USE ANY BLEACH OR STAIN REMOVING CHEMICAL.  
☎ IRON THE FABRIC AT MODERATE TEMPERATURE.



SLEEVES



EMB FRONT



EMB DUPATTA





SLEEVES



EMB FRONT



**FABRIC DETAILS**  
 TOP: FABRIC: COTTON WITH DELAY  
 WORKING CUMMERBAND & BOW  
 DUPATTA: FABRIC: COTTON WITH  
 LACEWORKERY LACE  
 BOTTOM: SHIRT ONLY

WE CLEAR PINK  
 IN MATCH ANY SHADE OF COLOR WORKING CUMMERBAND  
 AND THE NAME OF SHIRT ONLY AVAILABLE

EMB DUPA



SLEEVES



EMB FRONT



**FABRIC DETAILS**  
 TOP: CLASSIC COTTON WITH HEAVY  
 ACRYLIC EMBROIDERY WORK  
 DUPATTA: 100% SILK WITH  
 EMBROIDERY LACE  
 BOTTOM: SEMI LINEN

EMB DUPAT







D.NO.:1037 A



D.NO.:1037 B



D.NO.:1037 C



**FABRIC DETAILS**

**TOP.** CAMBRIC COTTON WITH HEAVY BORING EMBROIDERY WORK

**DUPATTA.** TABBY SILK WITH EMBROIDERY LACE

**BOTTOM.** SEMILOWN