







SAYA  
FASHION



**SAYA FASHION**

**D.NO.001**  
TOP: ORGENZA WITH EMBROIDERY WITH KHATLI WORK  
BOTTOMS: SANTOON  
DUPATTA: ORGENZA WITH EMBROIDERY

DESIGNER: SANGHVI  
WWW.SANGHVI.COM






## ST-2015 B

TOP: **ORGENZA WITH EMBROIDERY  
WITH KHATLI WORK**

BOTTOM/INNER: **SANTOON**

DUPATTA: **ORGENZA WITH EMBROIDERY**

DRY CLEAN ONLY.   
DO NOT USE ANY BLEACH OR STAIN REMOVEG CHEMICAL.   
IRON THE FABRIC AT MODERATE TEMPERATURE. 








## ST-2015 C

TOP: **ORGENZA WITH EMBROIDERY  
WITH KHATLI WORK**

BOTTOM/INNER: **SANTOON**

DUPATTA: **ORGENZA WITH EMBROIDERY**

DRY CLEAN ONLY.   
DO NOT USE ANY BLEACH OR STAIN REMOVEG CHEMICAL.   
IRON THE FABRIC AT MODERATE TEMPERATURE. 








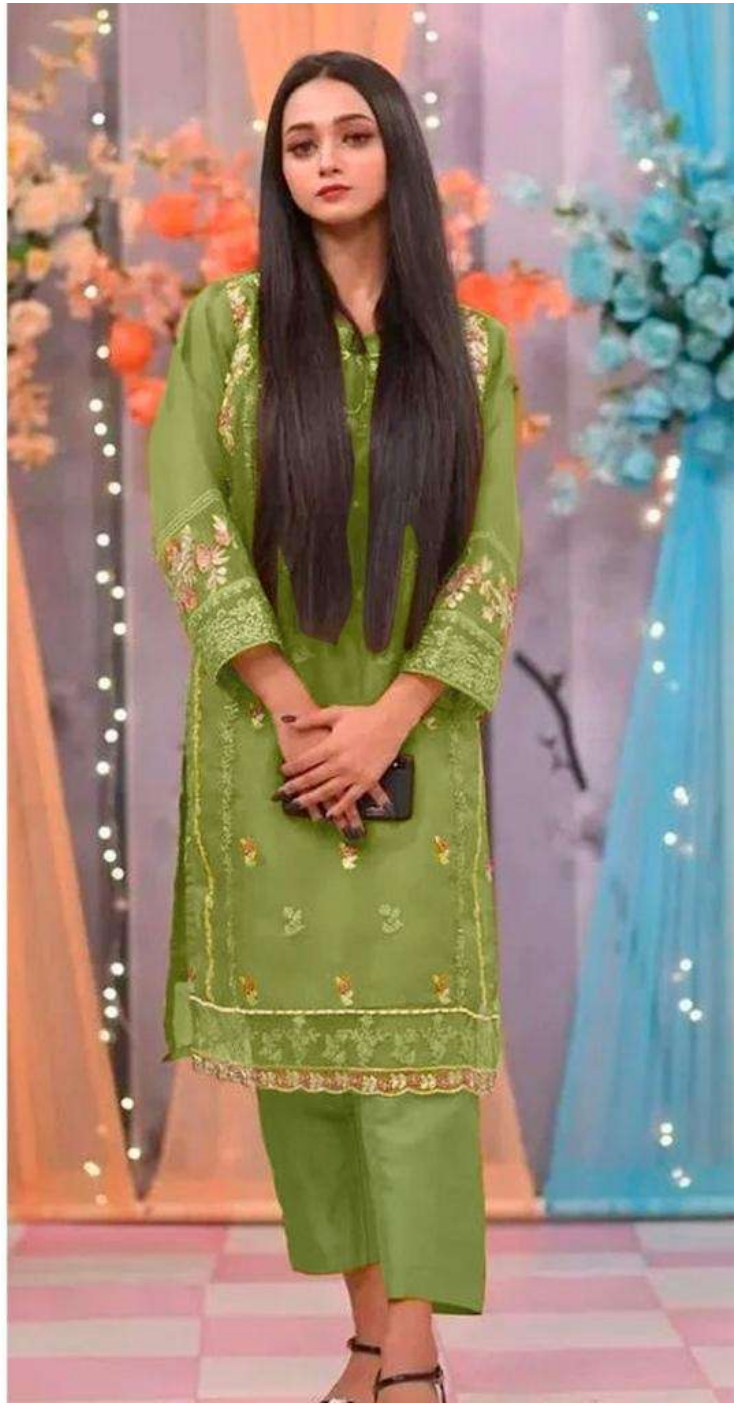
## ST-2015 A

TOP: **ORGENZA WITH EMBROIDERY  
WITH KHATLI WORK**

BOTTOM/INNER: **SANTOON**

DUPATTA: **ORGENZA WITH EMBROIDERY**

DRY CLEAN ONLY.    
DO NOT USE ANY BLEACH OR STAIN REMOVEG CHEMICAL.    
IRON THE FABRIC AT MODERATE TEMPERATURE. 













*Saniya* 1992

**ST-2015 C**  
TOP: ORGANZA WITH EMBROIDERY  
WITH KHARAI WORK  
BOTTOM: LINEN, SANTOON  
DUPATA: ORGANZA WITH EMBROIDERY



ST-2015 A



ST-2015 B



ST-2015 C

