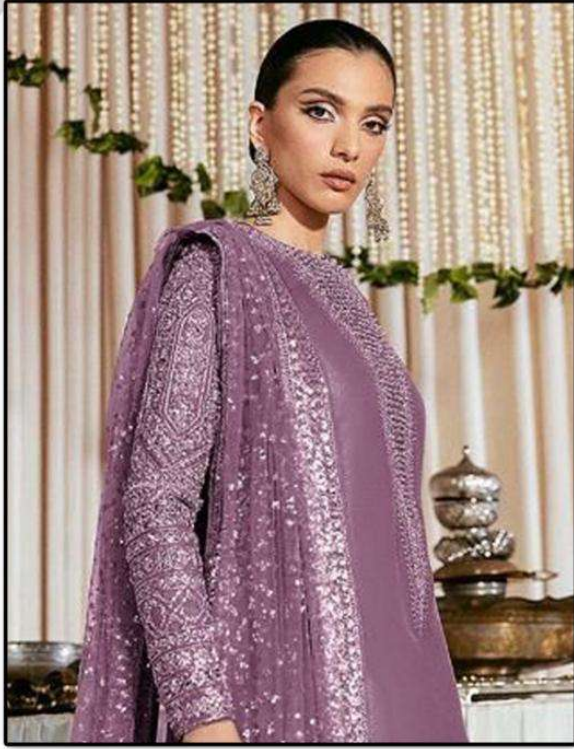




S
sheeshmahal®



#S-1320-E

Top- GEORGETTE
Bottom/Iner- SANTOON
Dupatta- NAZMEEN

WASHING INSTRUCTIONS
DO NOT USE ANY TYPE OF BLEACH OR OTHER BLEACHING AGENTS
BEFORE DYEING OR COLORING FABRIC SHOULD BE SOAKED IN WATER
ALL COMPONENTS WASHED FOR 15 MINUTES
DO NOT KEEP FABRIC IN TUBS FOR LONGER THAN 24 HOURS
HIGH COLORED AND WHITE FABRICS SEPARATELY
IRON CLOTHES AT MODERATE TEMPERATURE DO NOT DRY FABRIC IN DIRECT SUNLIGHT
(EXTRA LACES, HANGINGS AND ACCESSORIES ARE NOT INCLUDED)

S
sheeshmahal®



#S-1320-D

Top- GEORGETTE
Bottom/Iner- SANTOON
Dupatta- NAZMEEN

WASHING INSTRUCTIONS
DO NOT USE ANY TYPE OF BLEACH OR OTHER BLEACHING AGENTS
BEFORE DYEING COLOURS/FABRIC SHOULD BE SOAKED IN WATER
ALL COMPONENTS SEPARATELY FOR 15 MINUTES
DO NOT KEEP ANY FABRIC IN CONTACT WITH INK OR TOXIC COPPER/BRASS
HIGH COLOURED AND WHITE FABRICS SEPARATELY
IRON CLOTHES AT MODERATE TEMPERATURE DO NOT DRY FABRIC IN DIRECT SUNLIGHT
(EXTRA LACES/HANDKERCHIEFS AND ACCESSORIES ARE NOT INCLUDED)



S
sheeshmahal®



#S-1320-B

Top- GEORGETTE
Bottom/Iner- SANTOON
Dupatta- NAZMEEN

WASHING INSTRUCTIONS
DO NOT USE ANY TYPE OF BLEACH OR OTHER BLEACHING AGENTS
BEFORE DRYING. COLORED FABRIC SHOULD BE SOAKED IN WATER
ALL COMPONENTS SEPARATELY FOR 15 MINUTES
DO NOT KEEP ANY FABRIC IN CONTACT WITH RUBBER TUBES OR WASHERS
DO NOT DRY IN DIRECT SUNLIGHT OR IN A DRYER
IRON CLOTHES AT MEDIUM TEMPERATURE DO NOT DRY FABRIC IN DIRECT SUNLIGHT
EXTRA LACES, HANGINGS AND ACCESSORIES ARE NOT INCLUDED



S
sheeshmahal®



#S-1320-C

Top- GEORGETTE
Bottom/Iner- SANTOON
Dupatta- NAZMEEN

WASHING INSTRUCTIONS
DO NOT USE ANY TYPE OF BLEACH OR OTHER BLEACHING AGENTS
BEFORE DRYING OR WASHING SHOULD BE SOAKED IN WATER
ALL COMPONENTS WASHED FOR 15 MINUTES
DO NOT KEEP WET FABRIC IN TRAYED ROOM IN ORDER TO AVOID COUP MARKS
HIGH COLOURED AND WHITE FABRIC SEPARATELY
IRON CLOTHES AT MEDIUM TEMPERATURE DO NOT DRY FABRIC IN DIRECT SUNLIGHT
(EXTRA LACES, HANGINGS AND ACCESSORIES ARE NOT INCLUDED)





S
sheeshmahal®



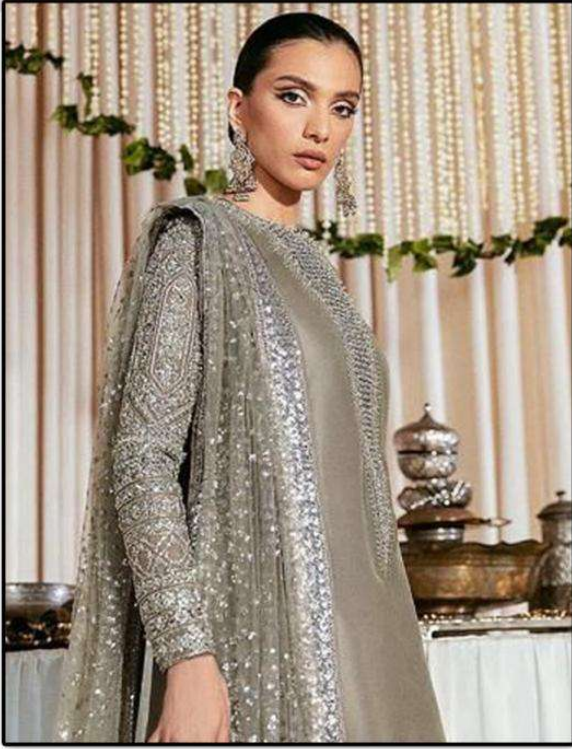
#S-1320-G

Top- GEORGETTE
Bottom/Iner- SANTOON
Dupatta- NAZMEEN

WASHING INSTRUCTIONS
DO NOT USE ANY TYPE OF BLEACH OR STAIN REMOVING CHEMICALS
BEFORE DRYING. COLOURS MAY BLEED. SHOULD BE WASHED IN WATER
ALL COMPONENTS SEPARATELY FOR 15 MINUTES
DO NOT USE HOT WATER. IN TRIMMED ITEM IN ORDER TO AVOID COP MARKS
HIGH COLOURED AND WHITE FABRICS SEPARATELY
IRON CLOTHES AT MODERATE TEMPERATURE. DO NOT DRY FABRIC IN DIRECT SUNLIGHT
(EXTRA LACES, HANGINGS AND ACCESSORIES ARE NOT INCLUDED)



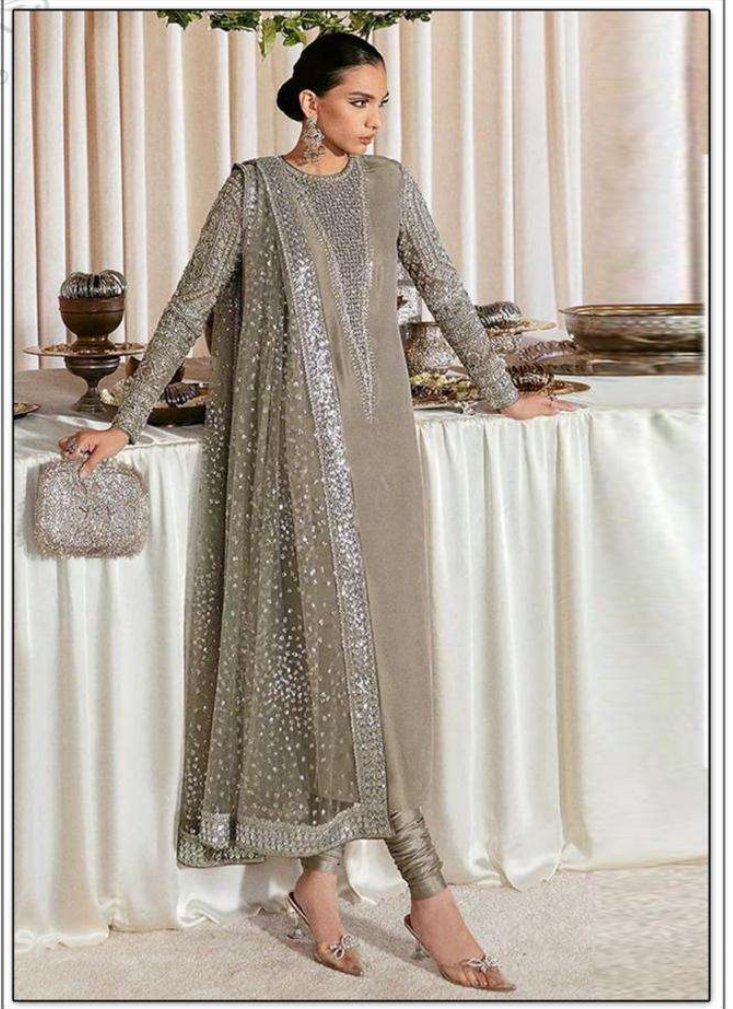
S
sheeshmahal®



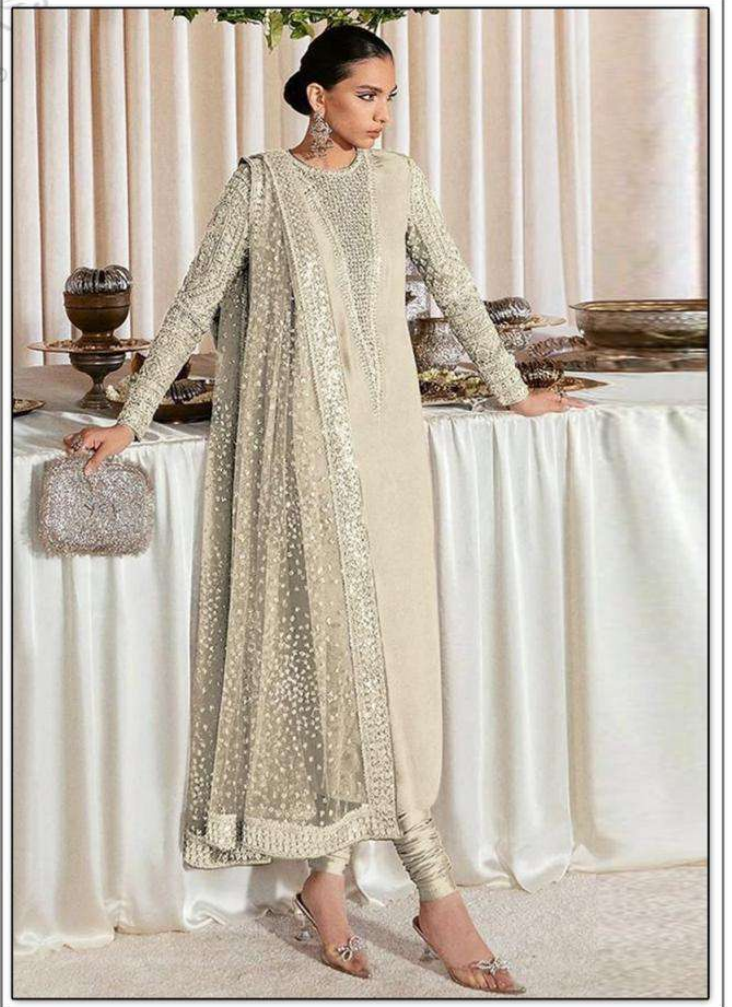
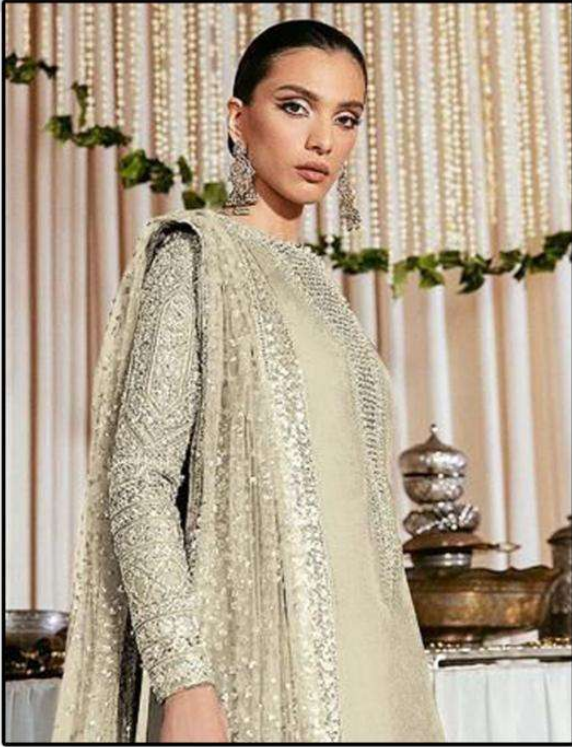
#S-1320-A

Top- GEORGETTE
Bottom/Iner- SANTOON
Dupatta- NAZMEEN

WASHING INSTRUCTIONS
DO NOT USE ANY TYPE OF BLEACH OR OTHER BLEACHING AGENTS
BEFORE DRYING OR WASHING SHOULD BE COMPLETED IN WATER
ALL COMPONENTS WASHED FOR 15 MINUTES
DO NOT USE HOT WATER. IN TIGHTED FROM IN ORDER TO AVOID TOP WASH
HIGH COLOURED AND WHITE FABRICS SEPARATELY
IRON CLOTHES AT MEDIUM TEMPERATURE DO NOT DRY FABRIC IN DIRECT SUNLIGHT
EXTRA LACES, HANGINGS AND ACCESSORIES ARE NOT INCLUDED



S
sheeshmahal®



#S-1320-F

Top- GEORGETTE
Bottom/Iner- SANTOON
Dupatta- NAZMEEN

WASHING INSTRUCTIONS
DO NOT USE ANY TYPE OF BLEACH OR OTHER BLEACHING AGENTS
BEFORE DRYING. COLOURED FABRICS SHOULD BE SOAKED IN WATER
ALL COMPONENTS SEPARATELY FOR 15 MINUTES
DO NOT KEEP ANY FABRIC IN CONTACT WITH IRON OR STEEL TO AVOID COUP MARKS
KEEP COLOURED AND WHITE FABRICS SEPARATELY
IRON CLOTHES AT MODERATE TEMPERATURE DO NOT DRY FABRIC IN DIRECT SUNLIGHT
(EXTRA LACES, HANGINGS AND ACCESSORIES ARE NOT INCLUDED)




sheeshmahal®

TOP- GEORGETTE
BOTTOM/INER - SANTOON
DUPATTA - NET



#S-1320 A

#S-1320 B

#S-1320 C

#S-1320 D

#S-1320 E

#S-1320 F

#S-1320 G

