

**TOP- JORJAT WITH EMBROIDERY**

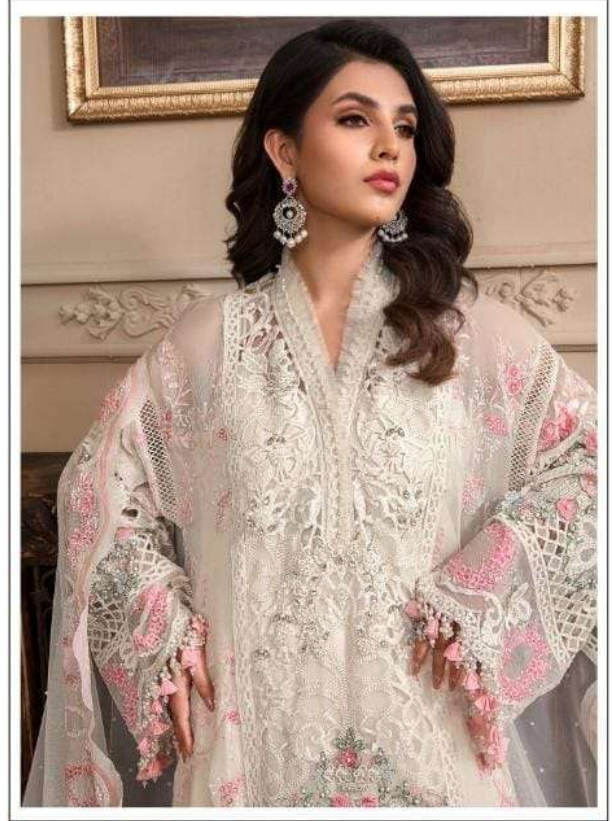
**BOTTOM/INNER- SANTOON**

**DUPATTA- NAZMEEN WITH EMBROIDERY**

**M-242-C**

-  DRY CLEAN ONLY.
-  DO NOT USE ANY BLEACH OR STAIN REMOVING CHEMICAL.
-  IRON THE FABRIC AT MODERATE TEMPERATURE.





**TOP- JORJAT WITH EMBROIDERY**

**BOTTOM/INNER- SANTOON**

**DUPATTA- NAZMEEN WITH EMBROIDERY**

**M-242-B**



- DRY CLEAN ONLY.
- DO NOT USE ANY BLEACH OR STAIN REMOVING CHEMICAL.
- IRON THE FABRIC AT MODERATE TEMPERATURE.





**TOP- JORJAT WITH EMBROIDERY**

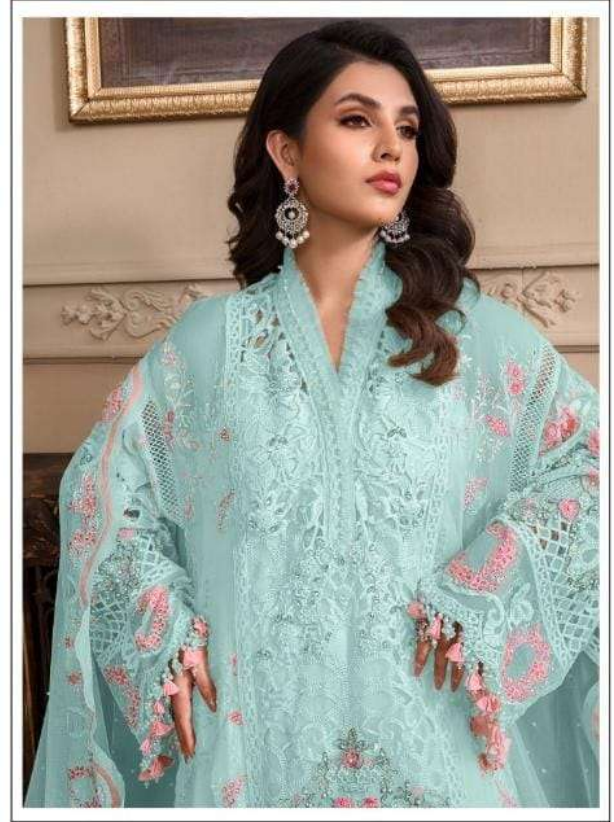
**M-242-D**

**BOTTOM/INNER- SANTOON**

**DUPATTA- NAZMEEN WITH EMBROIDERY**

-  **DRY CLEAN ONLY.**
-  **DO NOT USE ANY BLEACH OR STAIN REMOVING CHEMICAL.**
-  **IRON THE FABRIC AT MODERATE TEMPERATURE.**





**TOP- JORJAT WITH EMBROIDERY**

**M-242-A**

**BOTTOM/INNER- SANTOON**

**DUPATTA- NAZMEEN WITH EMBROIDERY**

-  **DRY CLEAN ONLY.**
-  **DO NOT USE ANY BLEACH OR STAIN REMOVING CHEMICAL.**
-  **IRON THE FABRIC AT MODERATE TEMPERATURE.**