



ANAYA VOL-01

VELVET COLLECTION



ANAYA VOL-01

VELVET COLLECTION



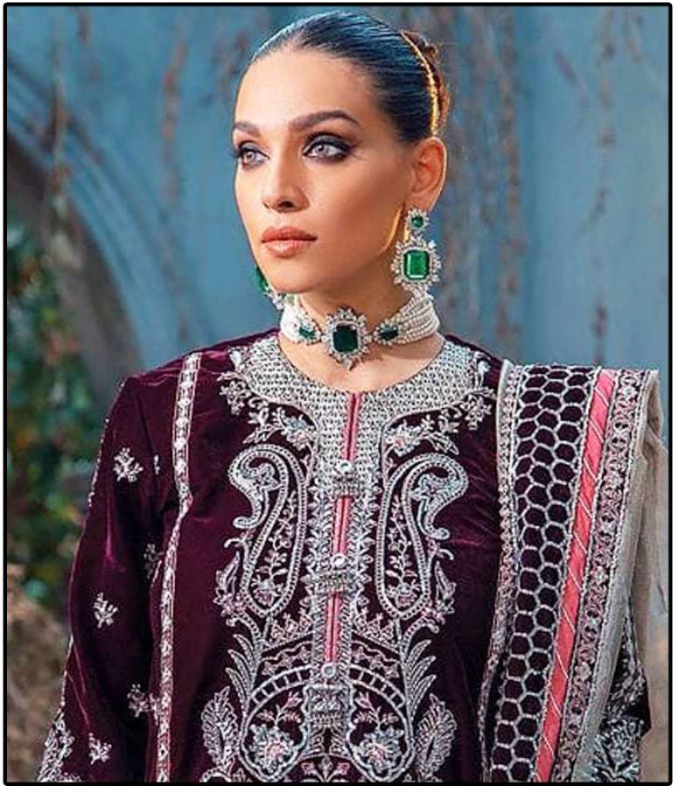
DS-144



DS-145



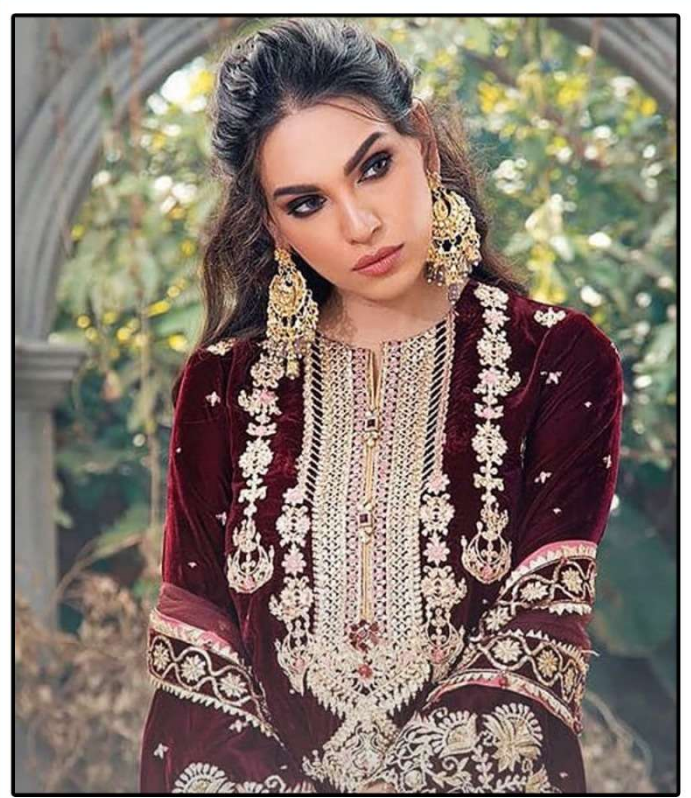
DS-146



DS-144

VELVET COLLECTION

WASHING INSTRUCTIONS
DO NOT USE ANY TYPE OF BLEACH OR CHLORINE BLEACH
REFRIGERATE OR DRY CLEANING SHOULD BE DONE IN WATER
ALL COMPONENTS SHOULD BE WASHED SEPARATELY
DO NOT KEEP THE FABRIC IN FOLDERS FOR LONGER PERIODS
WASH COLOURED AND WHITE FABRICS SEPARATELY
IRON COLOURED FABRICS AT LOW TEMPERATURE IN SHADOW
EXTRA LACES, HANGINGS AND ACCESSORIES ARE NOT INCLUDED



DS-145

VELVET COLLECTION

WASHING INSTRUCTIONS
DO NOT USE ANY TYPE OF BLEACH OR CHLORINE-BLEACHING AGENTS
REFRIGERATE CLOTHING IN WARM WATER. SHOULD BE WASHED IN WATER
ALL COMPONENTS SEPARATELY FOR 30 MINUTES
DO NOT KEEP WET FABRIC IN TRAYS FROM HOOKS TO AVOID COUP MARKS
WASH COLOURED AND WHITE FABRICS SEPARATELY
IRON CLOTHES AND ACCESSORIES TO DRY IN SHADY PLACE TO AVOID DIRECT SUNLIGHT
EXTRA LACES, HANGINGS AND ACCESSORIES ARE NOT INCLUDED

Dinsaa
Suits

Selves

Net
Emb
Dupatta



Bottom



Selves

Net
Emb
Dupatta



Bottom



Selves

Net
Emb
Dupatta

Bottom

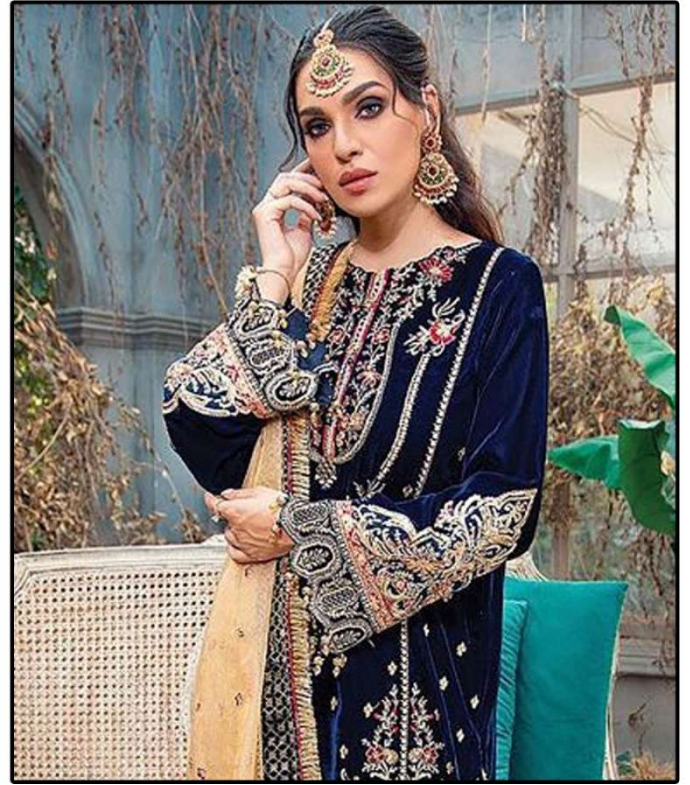


DS-144





Dinsaa
Suits



DS-146

**VELVET
COLLECTION**

WASHING INSTRUCTIONS
 DO NOT USE ANY TYPE OF BLEACH OR CHLORINE BLEACHING AGENTS
 BEFORE CUTTING OR FINISHING, SHOULD BE WASHED IN WATER
 ALL COMPONENTS SEPARATELY FOR 5 MINUTES
 DO NOT KEEP HANGING IN FOLDERS IN ORDER TO AVOID COUP MARKS
 WASH COLOURED AND WHITE FABRICS SEPARATELY
 NEW COLOURED FABRICS SHOULD BE WASHED IN DIRECT SUNLIGHT
 EXTRA LACES, HANGINGS AND ACCESSORIES ARE NOT INCLUDED